

Calculating 2006

A Computer Programme to Calculate the Results in Artistic Roller Skating Competitions

Seminar



CALCULATING 2006

**A Computer Programme
to Calculate the Results
in Artistic Roller Skating Competitions**

Garmisch-Partenkirchen, 04.06.2006

Richard Gussmann

1

Agenda

- Installation
Tips and Tricks
- Introduction
- Use of the Programme



2

Calculating 2006

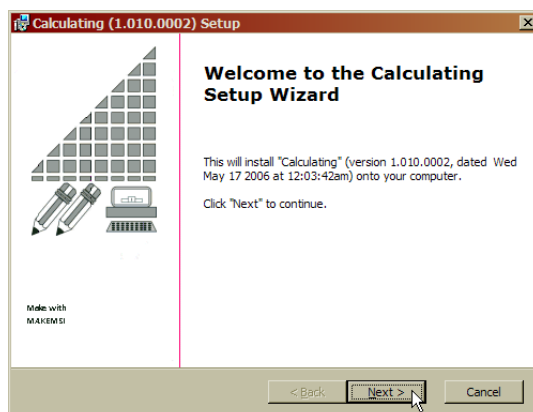
Installation (1)



- Necessary Programs
 - Adobe Reader
(Adobe Acrobat Reader 5.0 or higher)
 - Sun Java Runtime-Environment
(Version 1.4.2 or higher)
 - Calculating 2006
- Additional Programs
 - PDFCreator
 - OpenOffice
 - Microsoft Word

3

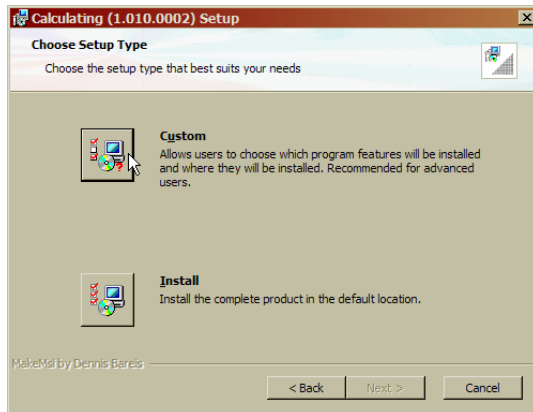
Installation (2)



4

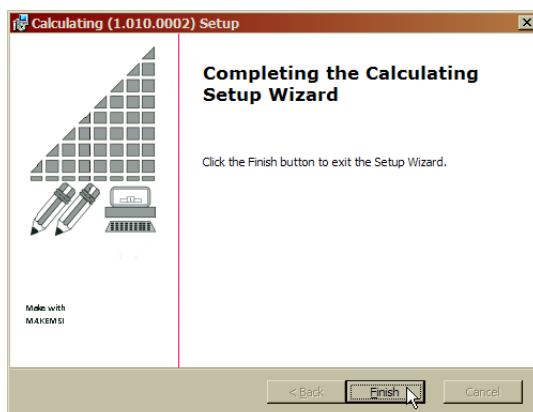
Calculating 2006

Installation (3)



5

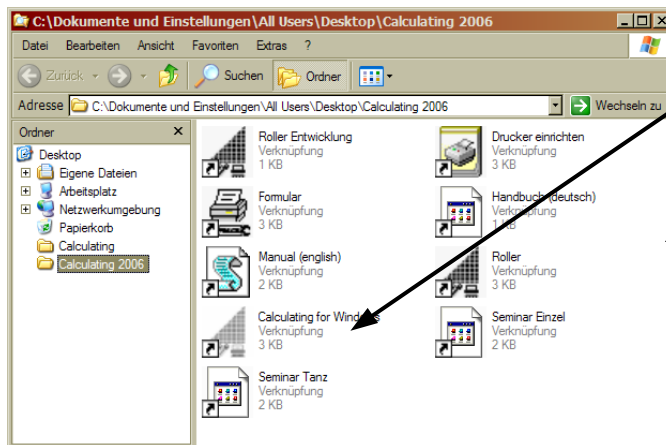
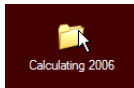
Installation (4)



6

Calculating 2006

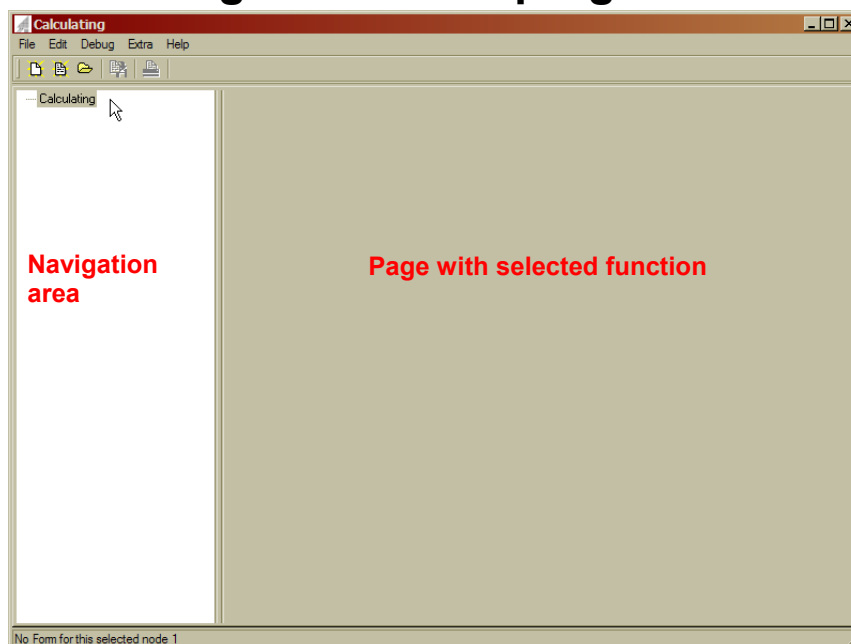
Installation (5) Start Calculating 2006



Start of the
Calculating
Programme

7

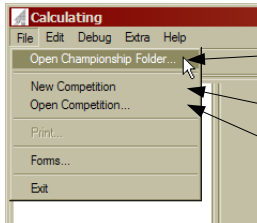
Bedienung des Rechenprogramms



8

Calculating 2006

Use of the Programme



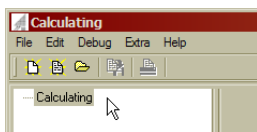
→ Select the folder with the competition data files



→ Create a new competition



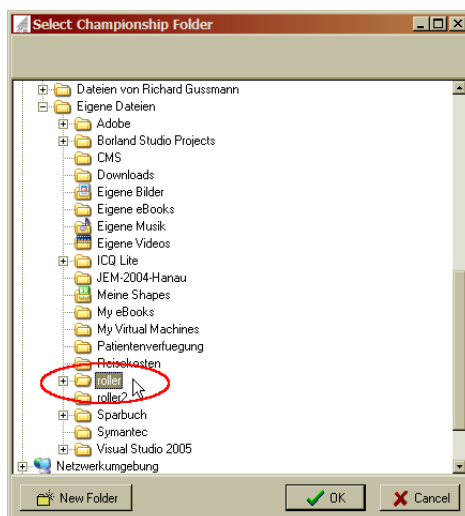
→ Open a existing competition



The folder "My Documents\roller" will be used to store the competition data files by default.

9

Select a folder for the competition data files



10

The Usage of the Calculating Programme



1. Create Events
2. Enter the Competitors
3. Competition Components
4. Compulsory Figures or Compulsory Dances
5. Skating Order
6. Jury
7. Mark Input
8. Create Reports
9. Judges Forms
10. Precision and Show Competitions

11

Create Events (1)



- Manage Events
 1. Delete them
 2. Create them
 3. multiple Events
- Create Competitions
 1. New Ones
 2. Additional

12

Calculating 2006

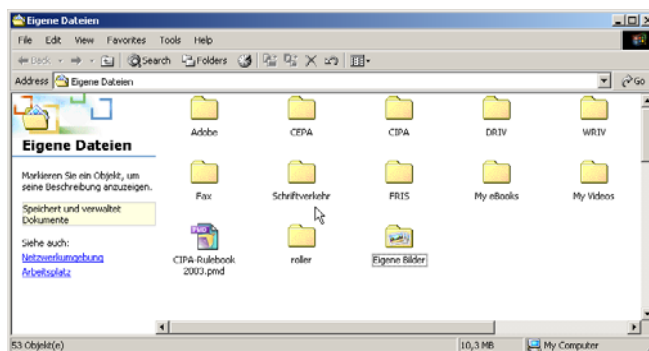
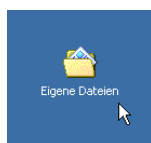
Delete an Existing Event or Championship



- Competition data files will be saved with the file extension *.rol
 - Additional Data will be stored in the file roller.sts
- Competition Data Files will be stored in the Folder **My Documents\roller**

13

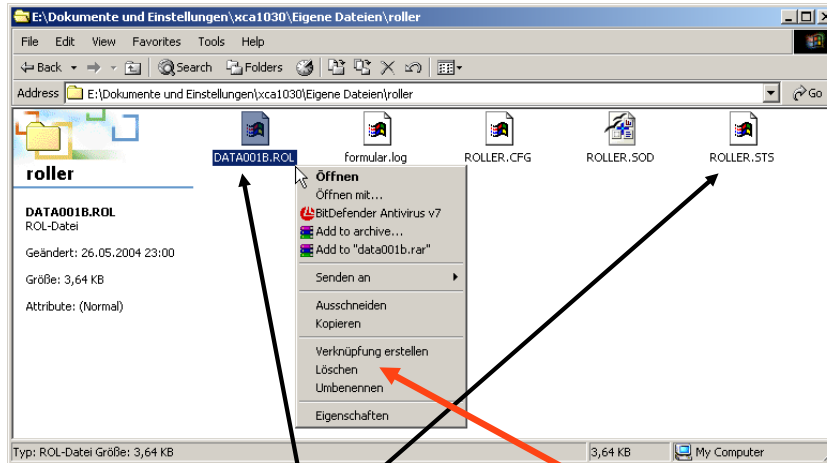
Delete an Existing Event or Championship (2)



14

Calculating 2006

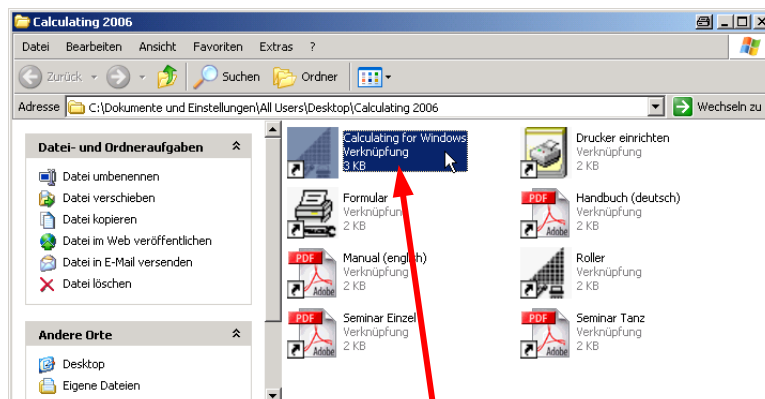
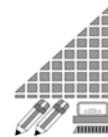
Delete an Existing Event or Championship (3)



Delete the Files *.rol and *.sts

15

Run the Calculating Programme



Clicking twice the Icon „Calculating for Windows will start the Calculating Programme

16

Create Events/Championships and Competitions



Enter the data for

- the Event
- the Venue
- the Date

Enter data for each Competition

- Name of the Competition
- Type of Competition
Single, Pairs, Dance, ~~Quartets~~,
~~Precision~~, ~~Show~~
- Type of the Competition
German, International
(C.I.P.A./C.E.P.A.)

17

Create Events/Championships and Competitions



Precision, Quartett and Show Competitions

Show, Quartett and Precision Competitions have to be configured as Pair Skating Competitions

- Name of the Presentation
- Name of the Team

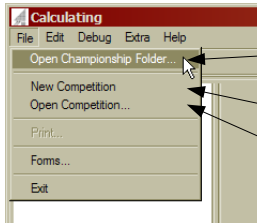
In Pair Skating Events there is the possibility to enter both the name of the team as well as the name of the presentation.

Select only the long programme in the competition components option.

18

Calculating 2006

Use of the Programme



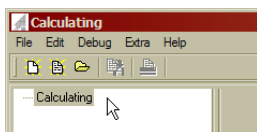
→ Select the folder with the competition data files



→ Create a new competition



→ Open a existing competition



The folder "My Documents\roller" will be used to store the competition data files by default.

19

Exercise: Create Competitions



- **Event:** Entenhausener Breitensportwettbewerb
Date: 3./4. Juni 2006
- **ERSTLINGE**
 Conditions: keine Prüfung
 Compulsory: none
 Long: freie Elemente zu Musik 1:00 bis 1:30 min. (ohne Toleranz)
- **ANFÄNGER** (only Combined)
 Conditions: keine Prüfung
 Compulsory: No 1 Bogenachter RVA
 Long: freie Elemente zu Musik 1:00 bis 1:30 min. (ohne Toleranz)
- **FREILÄUFER** (only Combined)
 Conditions: mindestens Freiläufer – höchstens Figurenläufer
 Compulsory: No 1 Bogenachter Rva
 No 2 Bogenachter Rve
 Long: freie Elemente zu Musik 1:30 bis 2:00 min. (ohne Toleranz)

20

Exercise: Create Competitions (2)



- **FIGURENLÄUFER** (nur Kombination)
Compulsory 2 Compulsory Figures – 2 Groups:
 - Group Figl.1: Nr.3a Bogenachter Rra
Nr.7a Dreier Rva
 - Group Figl.2: Nr.5 Schlangenbogen va
Nr.7a Dreier Rva
 Long: freie Elemente zu Musik 1:30 bis 2:00 min. (ohne Toleranz)
- **KUNSTLÄUFER**
Compulsory: 3 Pflichtfiguren – 2 Groups
 - Group Kul.1: Nr.3a Bogenachter Rra
Nr.9 Dreier ve
Nr.28 Schlbg.-Doppeldreier va
 - Group Kul.2.: Nr.2a Bogenachter Rve
Nr.8 Dreier va
Nr.28 Schlbg.-Doppeldreier va
 Long: freie Elemente zu Musik 2:00 bis 2:30 min. (ohne Toleranz)

21

Exercise: Create Competitions (3)



- **NACHWUCHSKLASSE**
Compulsory: 3 Figures – 3 Groups
 - Group Naw.1: Nr.4a Bogenachter Rre
Nr.19 Gegendreier ve
Nr.14a Schlinge Rva
 - Group Naw.2: Nr.8 Dreier va
Nr.13a Doppeldreier Rre
Nr.15a Schlinge Rve
 Long: freie Elemente zu Musik 3:00 min. +/- 10 sec
- **CUP**
Compulsory: 3 Figures – 3 Groups
 - Group Cup 1: Nr.20 Wende va
Nr.19 Gegendreier ve
Nr.30 Schlbg.-Schlinge va
 - Group Cup 2 : Nr.22 Gegenwende va
Nr.18 Gegendreier va
Nr.16a Schlinge Rra
 Long: 3:00 min. +/- 10 sec.

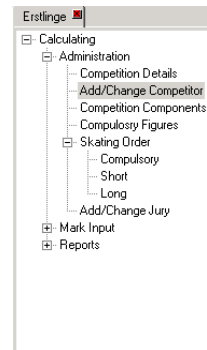
22

Preparation and Administration



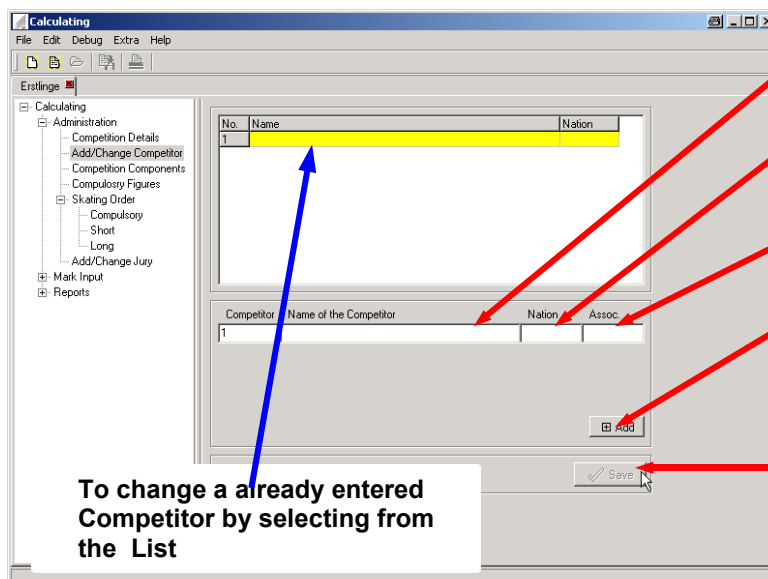
Preparation of a Competition – Required Steps

- Name and Club/Nation of the Competitors
➔ Add/Change Competitor
- Competition Components
➔ Competition Components
- Compulsory Figures/Compulsory Dances
➔ Compulsory Figures
- Jury
➔ Add/Change Jury
- Skating Order
➔ Skating Order



23

Administration Add/Change Competitor



Name of the Competitor

Club
NationAssociation
(German option)

Add to the Liste

Save all Changes

To change a already entered
Competitor by selecting from
the List

24

Calculating 2006

Exercise: Add Competitors



No	First Name	Last Name	Competition	Club
1	Annika	Bayer	Erstlinge	TGS Ober-Ramstadt
2	Linda	Hoffmann	Erstlinge	ASV Landau
3	Isabel	May	Erstlinge	ASV Landau
4	Anica	Pickel	Erstlinge	SG Arheilgen
5	Julia	Veith	Erstlinge	KSG Georgenhausen

No	First Name	Last Name	Competition	Club
1	Ida	Agafonova	Freiläufer	1. Hanauer REC
2	Svenja	Hauck	Freiläufer	ASV Landau
3	Alina	Itter	Freiläufer	SG Arheilgen
4	Kira	Kiendorf	Freiläufer	SG Arheilgen
5	Lea	Kräckmann	Freiläufer	SG Arheilgen
6	Soe Hyo	Olinger	Freiläufer	1. Hanauer REC
7	Carina	Schneider	Freiläufer	TGS Ober-Ramstadt
8	Eva	Schröder	Freiläufer	SG Arheilgen

25

Administration Competition Components



Components of the Competition

☐ Compulsory Figures

☐ Short Programme

☐ Long Programme

Number of Compulsory Figures

Competition Relation

	Compulsory	Short	Long
Top Sums	0	0	0
Factor	0	0	0

	Comp.	Short	Long		Comp.	Short	Long

Save

Competition Components

Number of Compulsory Figures

Selected Mathematical Relation
between the Competition
ComponentsList of possible Options
If there is more than one option
you have to select one

List of possible Options is only available with 3 competition components
 Ressource: Invitation Letter, national Rules, CEPA-Rules, CIPA-Rules

26

Calculating 2006

Administration Competition Components (2)



Components of the Competition

☒ Compulsory Figures
☒ Short Programme
☒ Long Programme

Number of Compulsory Figures

Competition Relation

	Compulsory	Short	Long
Top Sums	80	20	60
Factor	2	1	3

	Comp.	Short	Long	Comp.	Short	Long	
Top Sums	80	20	60	Factor	2	1	3
Top Sums	40	20	60	Factor	1	1	3
Top Sums	40	10	50	Factor	1	1/2	5/2
Top Sums	40	20	40	Factor	1	1	2

☒ Save

Example for
Singles Senior
Competition

27

Administration Compulsory Figures



Name of the Compulsory Figures

Figure 1:

1: Bogen-Achter va
 2: Bogen-Achter ve
 3: Bogen-Achter ra
 4: Bogen-Achter re
 5: Schlangenbogen va
 6: Schlangenbogen ra
 7: Dreier va
 8: Dreier ra

Predefined Groups

☒ Save

Select the
Compulsory Figure
and the starting foot

28

Calculating 2006

Administration Jury



Jury

Referee	Name: <input type="text" value="Marco Faggioni"/>	Nation: <input type="text" value="CEPA"/>
Assistant	<input type="text" value="Gonda Verbruggen"/>	<input type="text" value="CEPA"/>

Number of Judges:

Judge	Name	Nation
Judge 1	<input type="text" value="Carsten Steins"/>	<input type="text" value="GER"/>
Judge 2	<input type="text" value="Susan Brooks"/>	<input type="text" value="AUS"/>
Judge 3	<input type="text" value="Stephan Prudence"/>	<input type="text" value="GBR"/>
Judge 4	<input type="text" value="Lisa Cacciatori"/>	<input type="text" value="ITA"/>
Judge 5	<input type="text" value="Eva Frei"/>	<input type="text" value="SUI"/>
Judge 6	<input type="text"/>	<input type="text"/>
Judge 7	<input type="text"/>	<input type="text"/>
Judge 8	<input type="text"/>	<input type="text"/>
Judge 9	<input type="text"/>	<input type="text"/>

Referee
Assistant

Number of
Judges

Name of the Judges

It is mandatory to enter the number of judges!

29

Administration Skating Order



Sort list of competitors by:

No.	Name	Nation	Order
1	Nadja Heidtmann	SGA	
2	Iris Goldbeck	TGSF	
3	Martina Dammaschk	TGSF	
4	Beke Erhardt	TGSF	
5	Simone Gerber	ASVL	
6	Melanie Wechtenbruch	1844	
7	Melanie Michalczyk	REVH	

Option to sort the list of
skaters by

Clear the form and start
again

Enter the numbers
(Last input has to be
completed by pressing the
return key or the arrow up
key)

Save the skating order

30

Exercise: Competition Components and the Jury



- Record the competition components for the competitions you have already prepared.
- Enter the compulsory figures if necessary
- Enter the jury

Erstlinge	Referee:	Carsten Steins	DRIV
	Judge 1:	Vera Neumann	HESS
	Judge 2:	Iris Oswald	RPL
	Judge 3:	Nadja Heidtmann	HESS
Freiläufer	Referee:	Vera Neumann	HESS
	Judge 1:	Hans-Dieter Dahmen	RPL
	Judge 2:	Melanie Wagner	HESS
	Judge 3:	Ute Müller	SACH

31

Exercise: Preparation/Enter Competitors



- Create a new competition "Senior Ladies"
- Enter all competitors and their clubs

Senior Ladies – List of Competitors

	Name	Nation
1	Nadja Heidtmann	SGA
2	Iris Goldbeck	TGSF
3	Martina Dammaschk	TGSO
4	Beke Erhardt	TGSO
5	Simone Gerber	ASVL
6	Melanie Wechtenbruch	1844
7	Melanie Michalczyk	REVH

32

Exercise: Compulsory Figures/Jury



- **Jury**

Karl-Heinz Groß	HESS (Judge and Referee)
Hans-Dieter Dahmen	RPL
Uwe Neumann	SÜBA
Michael Seeger	WRIV
Monika Tietjen	HESS
Frank Weis	SAAR
- **Compulsory Figures**

Gegenwende Lva	Nr. 22 left
Doppeldreier-Paragraph Rra	Nr. 37 right
Schlingen-Paragraph Lva	Nr. 38 left
Gegendreier-Paragraph Rra	Nr. 41 right
- **Start of the Figures: 1 : 3 : 4 : 5**
- **Exercise: Enter the jury and the Compulsory Figures**

33

Exercise: Enter the Skating Order



Senior Ladies - List of Competitors - After the Draw

	Namen	Nation	Verband	Comp	Short
1	Nadja Heidtmann	SGA	HESS	5	-
2	Iris Goldbeck	TGSF	HESS	1	2
3	Martina Dammaschk	TGSO	HESS	3	1
4	Beke Erhardt	TGSO	HESS	-	3
5	Simone Gerber	ASVL	RPL	4	-
6	Melanie Wechtenbruch	1844	SÜBA	2	-
7	Melanie Michalczyk	REVB	WRIV	-	-

Exercise:

Delete Competitor Melanie Michalczyk

Note: After entering the starting order, you should not delete a Competitor.

Just enter the starting number zero (0) in this case.

zu vergeben!

Enter the Skating Order for Compulsory and the Short Programme

Note: Competitors who are not skating in the compulsory figures or in the free should be entered the number 0 (Zero)

34

Calculating 2006

Mark Input Compulsory



Next Competitor

option to select other competitor

Compulsory figure

Delete the marks already entered

options

save the marks and go to the next skater

35

Mark Input



Compulsory Figure 1

Iris Goldbeck			TGSF	.		
Pflicht-Figur 1	6.8	6.8	6.8	6.8	6.8	
Melanie Wechtenbruch			1844	.		
Pflicht-Figur 1	7.3	7.6	7.3	7.1	7.4	
Martina Dammaschk			TGSO	.		
Pflicht-Figur 1	6.7	6.6	6.7	6.5	6.6	
Simone Gerber			ASVL	.		
Pflicht-Figur 1	6.6	6.4	6.5	6.1	6.5	
Nadja Heidtmann			SGA	.		
Pflicht-Figur 1	7.5	7.1	7.5	7.2	7.1	

Compulsory Figure 2

Martina Dammaschk			TGSO	.		
Pflicht-Figur 2	7.1	7.2	7.2	7.1	7.1	
Simone Gerber			ASVL	.		
Pflicht-Figur 2	6.4	6.7	6.3	6.3	6.7	
Nadja Heidtmann			SGA	.		
Pflicht-Figur 2	7.3	7.5	7.0	6.8	7.1	
Iris Goldbeck			TGSF	.		
Pflicht-Figur 2	7.6	7.5	7.7	7.5	7.6	
Melanie Wechtenbruch			1844	.		
Pflicht-Figur 2	7.8	7.6	7.6	7.4	7.7	

Exercise: Enter the marks for figure 1 and 2

36

Calculating 2006

Mark Input



Compulsory Figure 3

Simone Gerber ASVL
Pf.-Figur 3 6.0 6.0 6.0 6.0 6.0

Nadja Heidtmann SGA
Pf.-Figur 3 7.7 7.5 7.7 7.5 7.5

Iris Goldbeck TGSF
Pf.-Figur 3 7.8 7.4 7.6 7.2 7.7

Melanie Wechtenbruch 1844
Pf.-Figur 3 8.5 8.2 8.5 8.0 8.6

Martina Dammaschk TGSO
Pf.-Figur 3 7.0 6.8 7.2 7.0 7.2

Compulsory Figure 4

Nadja Heidtmann SGA
Pf.-Figur 4 7.8 7.8 7.8 7.8 7.8

Iris Goldbeck TGSF
Pf.-Figur 4 7.6 7.8 7.5 7.4 7.7

Melanie Wechtenbruch 1844
Pf.-Figur 4 8.5 8.6 8.0 8.1 8.6

Martina Dammaschk TGSO
Pf.-Figur 4 7.5 7.7 7.7 7.3 8.0

Simone Gerber ASVL
Pf.-Figur 4 7.9 7.8 7.5 6.8 7.1

Exercise: Enter the marks for figure 3 and 4

37

Mark Input Corrections



The referee got the list of the results when the third judge notices that there has been a wrong mark. When checking the marks with the other recordings, it has been clear, there has been entered a wrong mark.

Exercise: Change the mark of the skater
Iris Goldbeck TGSF
in the compulsory figure 3 of the judge no 3

Iris Goldbeck TGSF
Pf.-Figur 3 7.8 7.4 **7.8** 7.2 7.7

Recommendation: Before you save the marks it is highly recommended to check the marks with the other calculators and the manual protocol!

38

Calculating 2006

Mark Input Short Programme



Short Programme

Martina Dammaschk
Kurzkür A-Note
Kurzkür B-Note

TGSO .

Iris Goldbeck

TGSF .

Kurzkür A-Note	8.1	8.1	8.2	8.2	8.2
Kurzkür B-Note	8.1	8.1	8.2	8.2	8.2

Beke Erhardt

TGSO .

Kurzkür A-Note	7.4	7.4	7.3	7.1	7.0
Kurzkür B-Note	7.1	7.0	6.8	6.8	6.7

- During warm up there happens a accident!
Martina Dammaschk broke the skate during the landing of the double axel.
- Exercise: Call the skater Martina Dammaschk back. Which means remove her from the list of the next skater. Use the menu "Extra" and the option "Take Competitor back".
- Exercise: Enter the marks of the remaining skaters.

39

Mark Input Short Programme



Short Programme

Iris Goldbeck

TGSF

Kurzkür A-Note	8.1	8.1	8.2	8.2	8.2
Kurzkür B-Note	8.1	8.1	8.2	8.2	8.2

Beke Erhardt

TGSO

Kurzkür A-Note	7.4	7.4	7.3	7.1	7.0
Kurzkür B-Note	7.1	7.0	6.8	6.8	6.7

Martina Dammaschk

TGSO

Kurzkür A-Note	7.5	7.5	7.5	7.5	7.5
Kurzkür B-Note	7.3	7.3	7.4	7.4	7.4

- Martina Dammaschk is a lucky girl.
She got a new skate from the service team.
- The referee allows the start at the end of the group.
- Exercise: Use the menu „Extra“ and the option „Take Competitor back“ to enable the mark input for Martina again.
- Exercise: Enter the marks for Martina.

40

Calculating 2006

Get Ready for the Long Programme



Result Short – Draw Long

Senior Ladies
Result Short

Name	Nation	Punkte	M.V.	
1 Iris Goldbeck	TGSF	81.600	2.0	3
2 Martina Dammaschk	TGSO	74.300	1.0	2
3 Beke Erhardt	TGSO	70.600	0.0	1

Referee
Karl-Heinz Groß

- After the result of the short programme has been published the referee does the draw of the long programme.
- Exercise: Enter the skating order. Select the option skating order long programme and change the the list of the skaters according to the result of the short programme.
Then enter the skating order.
Note: Competitors not skating the long programme will receive a starting number of zero (0).

41

Mark Input long Programme



Long Programme

Exercise: Enter the marks of the long programme

Beke Erhardt						TGSO
Kür	A-Note	7.5	7.5	7.5	7.5	7.5
Kür	B-Note	7.3	7.3	7.2	7.3	7.3

Martina Dammaschk						TGSO
Kür	A-Note	7.9	7.9	8.0	7.9	7.9
Kür	B-Note	7.8	7.8	7.9	7.9	7.7

Iris Goldbeck						TGSF
Kür	A-Note	8.4	8.5	8.4	8.5	8.6
Kür	B-Note	8.4	8.5	8.3	8.5	8.6

42

Results Singles



Results

- Endergebnisse
 1. Compulsory
 2. Free Short and Long
 3. Combined
- Intermediate Result
 - Short

Placemarks

- Final results
 1. Compulsory
 2. Free Short and Long
 3. Combined
- Intermediate Results
 1. Short
 2. Long (only)

43

Result Pairs



Results

- Final Results
 - Free Short and Long
- Intermediate Result
 - Short

Placemarks

- Final Results
 - Free Short and Long
- Intermediate Result
 - Short
 - Long (only)

44

Calculating 2006

Result Dance**Results**

- Final Results
 - Combined (Final)
- Intermediate Result
 - Compulsory Dance (Comp. Dance + O.D.)

Placemarks

- Final Results
 - Combined (Final)
- Intermediate Results
 1. Compulsory Dances
 2. O.D. (only)
 3. Compulsory Dances
Comp. Dance + O.D.
 4. Free Dance

45

Results Quartets, Show and Precision**Result**

- Final Result
 - Long
- There are no intermediate results

Placemarks

- Final Result
 - Long
- There are no intermediate results

46

Calculating 2006

Exercise

- Prepare the following competitions:
 - Senior Dance
 - Quartets
 - Precision
 - Senior Pairs

47

Exercise: Senior Dance**Senior Dance - List of Competitors**

	Namen	Nation	Verband
1	Gundel Gaukely	RCV	WDW
	Gustav Gans	RICE	WDW
2	Dorette Duck	RICE	WDW
	Dagobert Duck	RICE	WDW
3	Daisy Duck	RICE	WDW
	Donald Duck	RICE	WDW

Exercise
Enter the Competitors with their clubs.

48

Exercise: Senior Dance



Exercise:

The jury has 7 judges.

Compulsory Dances and O.D.

Dance 1: Italian-Foxtrott

Dance 2: Argentinischer Tango

O.D.: Polka

Start of the Dances: 1 : 2 : 3

49

Exercise: Senior Dance



Daisy Duck
Donald Duck

RICE
RICE

Pflicht-Tanz 1	9.2	8.3	8.7	8.6	8.8	9.0	9.0
Pflicht-Tanz 2	9.2	8.7	8.0	8.7	9.0	9.2	8.9
O.D. A-Note	9.4	9.3	9.1	9.3	9.3	9.6	9.5
O.D. B-Note	9.6	9.3	9.3	9.6	9.4	9.5	9.4
Kürtanz A-Note	9.5	9.8	9.7	9.5	9.6	9.8	9.5
Kürtanz B-Note	9.6	9.9	9.6	9.8	9.8	9.8	9.5

Dorette Duck
Dagobert Duck

RICE
RICE

Pflicht-Tanz 1	9.3	8.4	8.6	8.4	8.6	8.9	8.3
Pflicht-Tanz 2	9.0	8.5	9.0	9.2	9.1	9.3	8.8
O.D. A-Note	9.2	9.5	9.0	9.3	9.0	9.3	9.4
O.D. B-Note	8.9	9.6	8.9	9.4	8.7	9.0	9.0
Kürtanz A-Note	9.7	9.8	9.5	9.6	9.4	9.7	9.7
Kürtanz B-Note	9.7	9.8	8.9	9.6	9.2	9.4	9.3

50

Calculating 2006

Exercise: Senior Dance

Gundel Gaukley
Gustav Gans

RCV
RICE

Pflicht-Tanz 1	8.4	8.2	8.8	8.2	8.3	8.4	8.5
Pflicht-Tanz 2	7.9	7.9	8.7	8.4	8.8	8.3	8.0
O.D. A-Note	8.5	9.2	8.8	8.6	9.0	9.1	9.0
O.D. B-Note	8.3	9.2	8.8	8.7	9.1	9.1	9.0
Kürtanz A-Note	9.0	9.4	8.7	8.9	9.0	9.4	9.1
Kürtanz B-Note	8.7	9.0	8.5	8.7	8.7	9.1	8.7

51

Exercise: Quartet**Teilnehmerliste / List of Competitors**

1	Baguim	POR
	Matrix	
2	Gondomar	POR
	Z-four	
3	Argonchile	POR
	Requiett	
4	UAGN Patinage	FRA
	Deesses du Nil	
5	Othi's Rollers	FRA
	Perdues dans le temps	
6	Orvault RS	FRA
	Black Widow	
7	GS Guarino	ITA
	Animal Instinct	
8	Sincro Roller	ITA
	Froilen	

Teilnehmerliste / List of Competitors

9	Cristal S. Team	ITA
	Match Point	
10	RC de Oude Molen	NED
	Stile Fortemente	
11	RV Olympia	NED
	Slap that bass	
12	Pauwin	NED
	Yodi Alp	
13	TV Jahn Wolfsburg	GER
	Our Dream	
14	REG Kiel	GER
	Madagascar	
15	Rullest	EST
	Spiders	
16	Holon RS Team	ISR
	Emotions	

52

Exercise: Quartet



l'ordre de passage Programme longue /
Skating Order Long

1	Cristal S. Team	ITA
	Match Point	
2	Orvault RS	FRA
	Black Widow	
3	RV Olympia	NED
	Slap that bass	
4	GS Guarino	ITA
	Animal Instinct	
5	RC de Oude Molen	NED
	Stile Fortemente	
6	Rullest	EST
	Spiders	
7	Baguim	POR
	Matrix	
8	TV Jahn Wolfsburg	GER
	Our Dream	

l'ordre de passage Programme longue /
Skating Order Long

9	REG Kiel Madagascar	GER
10	Argonchile Requiett	POR
11	Sincro Roller Froilen	ITA
12	UAGN Patinage Deesses du Nil	FRA
13	Othi's Rollers Perdues dans le temps	FRA
14	Pauwin Yodi Alp	NED
15	Gondomar Z-four	POR
16	Holon RS Team Emotions	ISR

53

Quartet: Mark Input



	Sincro Roller			ITA				
	Froilen							
Kür	A-Note	8.3	8.1	8.5	9.0	7.9	8.0	8.4
Kür	B-Note	9.0	9.0	9.0	9.3	8.5	8.6	9.2

	GS Guarino			ITA				
	Animal Instinct							
Kür	A-Note	8.4	8.4	9.1	8.5	9.0	8.5	8.6
Kür	B-Note	8.5	8.6	9.5	8.7	9.4	8.8	8.8

Cristal S. Team				ITA				
	Match	Point						
Kür	A-Note	8.2	8.0	8.0	8.0	8.0	8.0	8.2
Kür	B-Note	8.3	8.2	8.2	8.1	8.3	8.3	8.3

	Orvault RS			FRA				
	Black Widow							
Kür	A-Note	7.3	7.1	8.2	7.5	7.4	7.3	8.0
Kür	B-Note	7.4	7.3	8.4	7.7	7.6	7.4	8.2

54

Calculating 2006

Quartet: Mark Input (2)



Rullest Spiders		EST						
Kür	A-Note	7.7	7.7	7.5	6.8	7.0	7.7	7.9
Kür	B-Note	8.0	8.1	7.7	7.0	7.1	8.0	8.1

Othi's Rollers Perdues dans le temps		FRA						
Kür	A-Note	7.2	7.4	7.8	7.3	7.4	7.3	7.6
Kür	B-Note	7.4	7.7	8.1	7.2	7.5	7.3	7.7

Holon RS Team Emotions		ISR						
Kür	A-Note	7.0	7.7	7.6	7.5	7.6	8.1	7.6
Kür	B-Note	6.6	8.0	7.5	7.2	7.3	8.5	7.3

Gondomar Z-four		POR						
Kür	A-Note	7.3	7.6	7.7	7.7	7.2	7.5	7.4
Kür	B-Note	7.4	7.8	8.0	7.6	7.0	7.8	7.0

55

Quartet: Mark Input (3)



Argonchile Requiett		POR						
Kür	A-Note	7.8	7.5	7.4	7.0	7.2	8.0	7.5
Kür	B-Note	8.1	7.8	7.5	6.8	7.0	8.0	7.3

Pauwin Yodi Alp		NED						
Kür	A-Note	7.5	7.5	7.3	7.4	7.3	7.8	7.4
Kür	B-Note	7.9	7.7	7.3	7.0	7.1	8.3	7.2

RV Olympia Slap that bass		NED						
Kür	A-Note	6.9	7.3	7.1	6.8	7.2	7.6	7.6
Kür	B-Note	7.2	7.6	7.1	6.6	7.3	7.7	7.6

RC de Oude Molen Stile Fortemente		NED						
Kür	A-Note	7.1	7.0	7.7	6.2	7.1	7.4	7.7
Kür	B-Note	7.2	6.8	7.9	6.2	7.2	7.5	7.8

56

Calculating 2006

Quartet: Mark Input (4)

	Baguim			POR	.			
	Matrix			.				
Kür	A-Note	7.6	7.4	6.6	6.7	7.3	7.0	7.6
Kür	B-Note	7.5	7.6	6.3	6.7	6.7	7.1	7.4

	REG Kiel			GER	.			
	Madagascar			.				
Kür	A-Note	6.9	7.4	6.5	7.4	7.0	7.0	7.5
Kür	B-Note	6.8	7.7	6.2	7.2	6.6	6.8	7.1

	UAGN Patinage			FRA	.			
	Deesses du Nil			.				
Kür	A-Note	6.9	7.2	7.2	7.0	6.9	7.2	7.5
Kür	B-Note	6.2	7.2	6.7	6.5	6.2	6.9	6.8

	TV Jahn Wolfsburg			GER	.			
	Our Dream			.				
Kür	A-Note	7.4	7.2	6.4	6.2	6.4	7.5	7.0
Kür	B-Note	7.4	6.8	6.1	6.0	6.1	7.5	6.8